

Configure computer to work with KwikQuant Imager

1. Install KwikQuant Image Analyzer software (Mac or PC version);
2. Make sure that “KQ Images” folder appears on deaktop after installation. If not, manually create the folder.

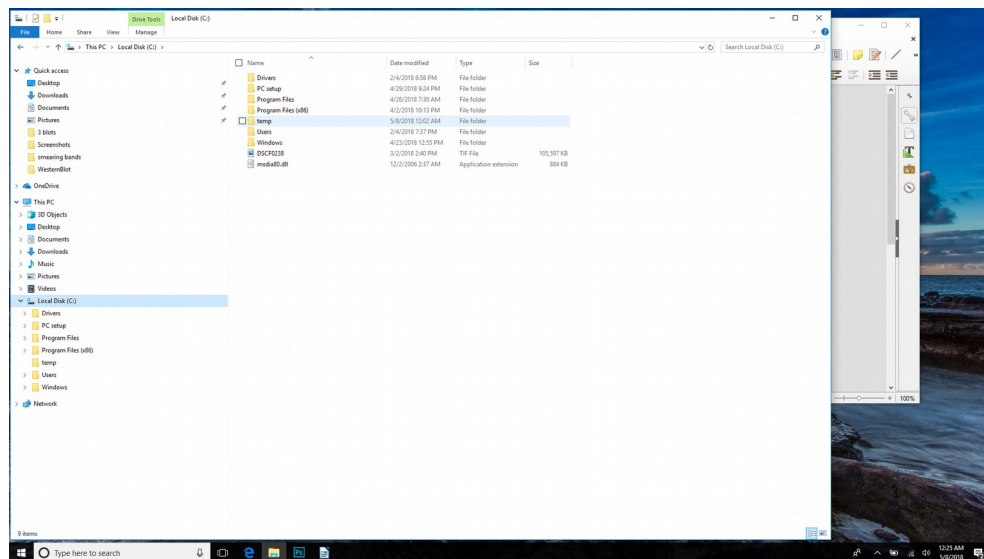
***** *Optional 1* *****

1. Install the latest Photoshop CC on PC;
2. Open “B&W.atn” file with Photoshop;

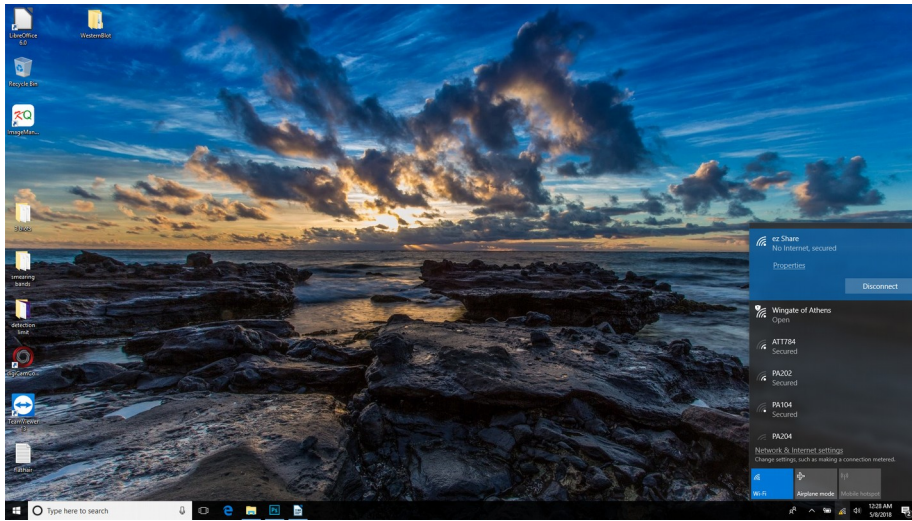
***** *Optional 2* *****

Configure 64-bit Windows PC (only) for wireless image transfer

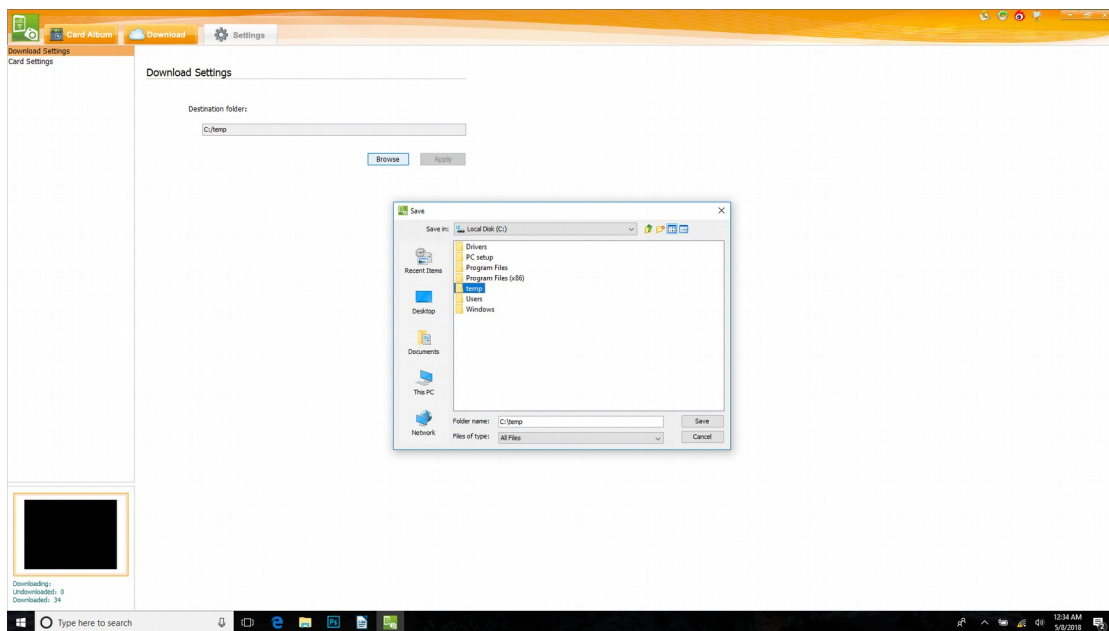
1. Install and configure ezShare wifi SD card app.
2. Create a “Temp” folder in C: drive



3. Power on KQ Imager, connect the camera wifi hotspot “ezShare” to the PC wifi network card. If the computer asks for password, it is “88888888”.

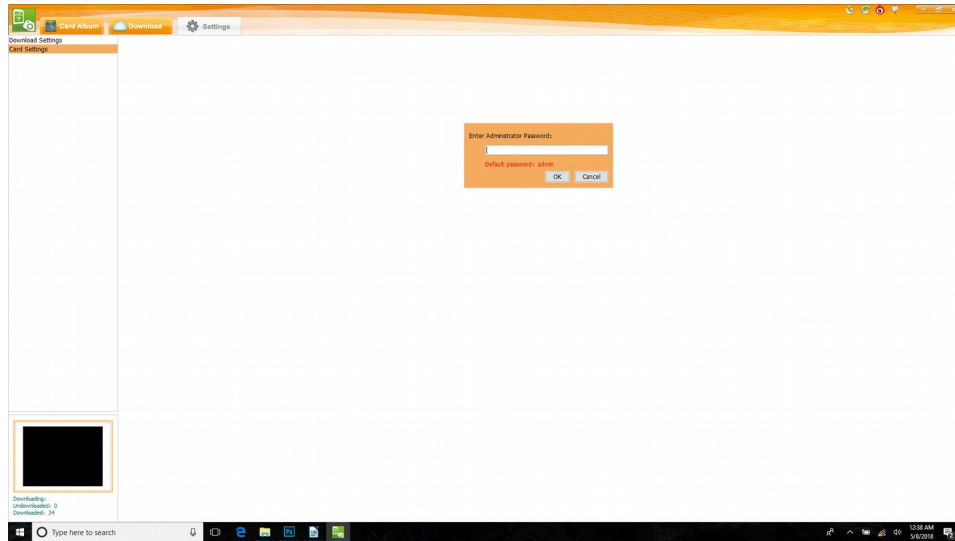


4. Launch ezShare app, open the “settings” page, select Destination folder as “C:\temp”

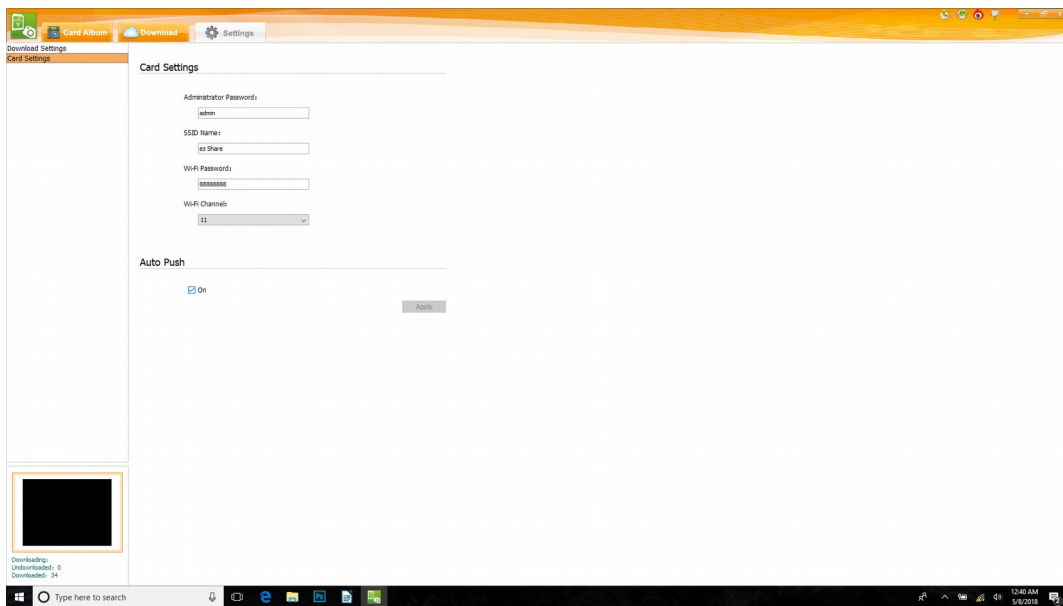


3

5. On the same “settings” page, click the “card setting” tab, type in “admin”



6. On card setting page, check “auto push” box, then click “save” button



7. Close all programs, and double click the KQ icon to launch the program.

